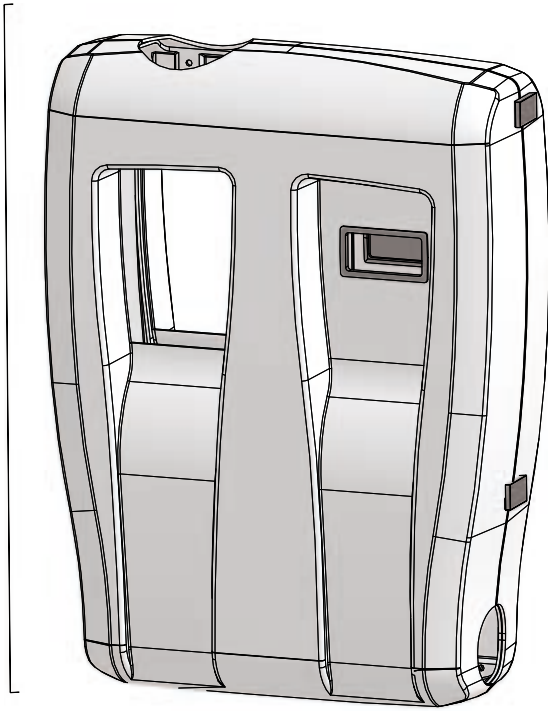


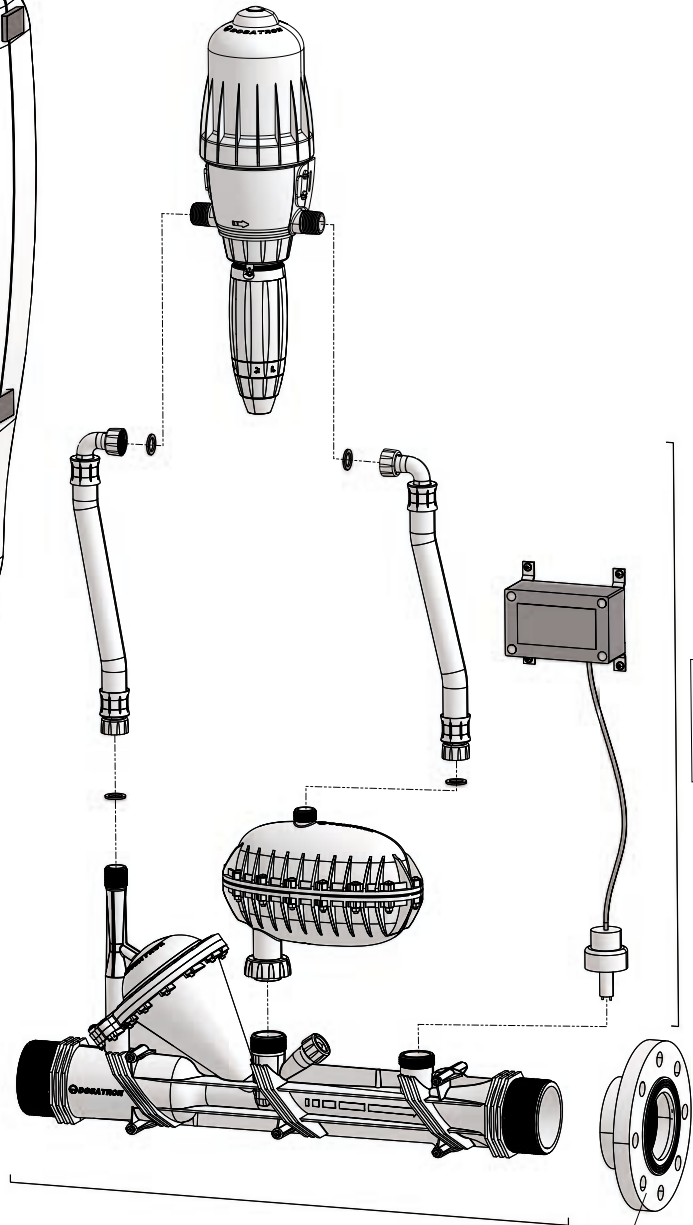
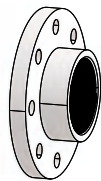
D30 0.1 - 1% EC

30m³/h - 0.1 - 1%
132 GPM - 1:1000 - 1:100
0.5 - 8 bar
7.25 - 116 psi

PJDI183



MPDI217



PJDI185

PJDI177

2x PDI1043

D30 0.1 - 1% EC

30m³/h - 0.1 - 1%
132 GPM - 1:1000 - 1:100
0.5 - 8 bar
7.25 - 116 psi

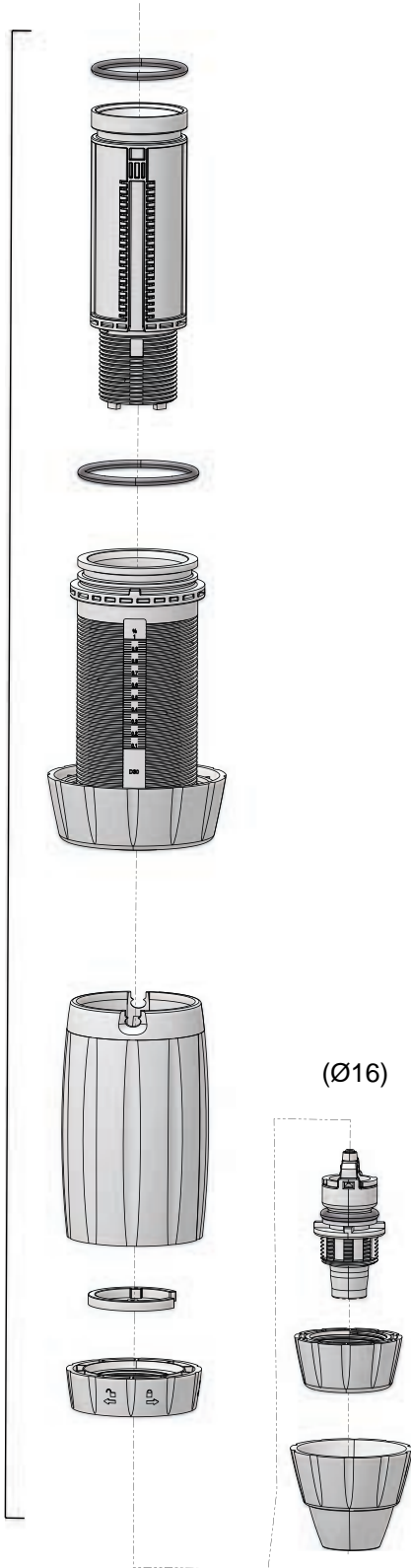
EMDI010



D30 0.1 - 1% EC

30m³/h - 0.1 - 1%
132 GPM - 1:1000 - 1:100
0.5 - 8 bar
7.25 - 116 psi

CDDI087



PJDI122

